



Set of Activities

Tambopata Research Center

EXPLORE THE HEART OF THE AMAZON RAINFOREST



Must Do Activities

EXPLORE THE HEART OF THE AMAZON RAINFOREST

Canopy Tower

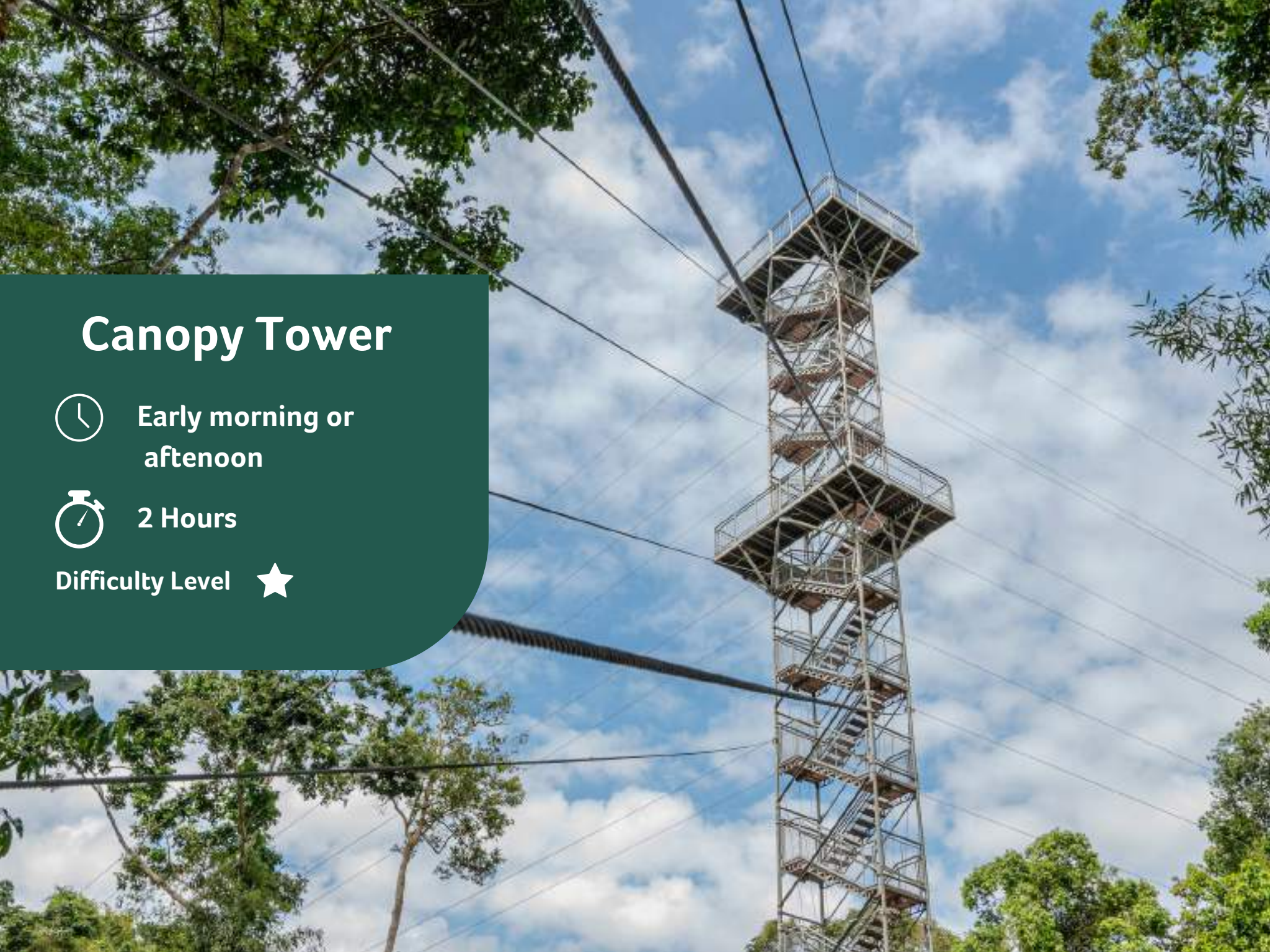


Early morning or
afternoon



2 Hours

Difficulty Level ★



Canopy Tower

The canopy tower is 30 meters high, and its structure is so well designed and developed that the stability is impressive. There is no sensation of movement even if several people climb at the same time. When we reach the top, not only are we surrounded by endless Amazon jungle, but on the other side of the tower we can see the Carabaya Mountains of Puno. Our guide tells us that in winter we will be able to see the snow-capped peaks. I look over there and think: we are the last ones on this road, so close to that eminent mountain.

We stay for the sunset or sunrise with a landscape that simply takes your breath away and fills you with an inexplicable energy.

Tambopata Research Center

EXPLORE THE HEART OF THE AMAZON RAINFOREST

Chuncho Claylick



Early morning
(Breakfast onsite)



Hlaf-day

Difficulty Level ★



Chuncho Macaw Claylick

Since Tambopata National Reserve is the world's best hot spot for macaws, this is a "must-do" on every itinerary. Take a morning trip into the Tambopata National Reserve to one of the famous macaw clay licks. The one-hour boat ride from the lodge and into the national reserve also offers outstanding opportunities for seeing wildlife. This clay lick is often visited by three species of large colorful macaws, and many other parrots, and parakeets.

Your guide will help you identify the birds seen at the clay lick, as well as other wildlife there and along the river. Binoculars and a provided spotting scope will take you that much closer to wildlife.

Tambopata Research Center

EXPLORE THE HEART OF THE AMAZON RAINFOREST

Palm Swamp Trail



Morning



3 Hours

Difficulty Level 

Palm Swamp Trail

Growing on the remains of a lake and providing both arboreal and terrestrial mammals with fruits throughout the year, aguaje palms are one of the most important food sources in the rainforest. Unfortunately, this habitat is also in high demand by humans as the swamps provide ideal conditions for planting rice, making palm swamps one of the most threatened habitats in the rainforest. The swamps are truly picturesque habitats and should be on the list of places to visit during your stay at TRC.

Tambopata Research Center

EXPLORE THE HEART OF THE AMAZON RAINFOREST



Island Exploration & Pond



Morning or Afternoon



2.5 Hours

Difficulty Level ★

Island Exploration & Pond

Ten minutes upstream from the lodge we find a small lagoon with a platform in the center where we will walk for about 30 minutes in search of wildlife. This is a great place to observe aquatic birds such as the beautiful Agami heron, the crowned heron, the rare curassow, mallard and hoatzin along with woodpeckers, oropendolas, flycatchers and parakeets. You will also have the opportunity to learn about the varieties of fish that live in the Amazon. If you are lucky, you may even see a caiman or two.

Tambopata Research Center

EXPLORE THE HEART OF THE AMAZON RAINFOREST

8 Primates

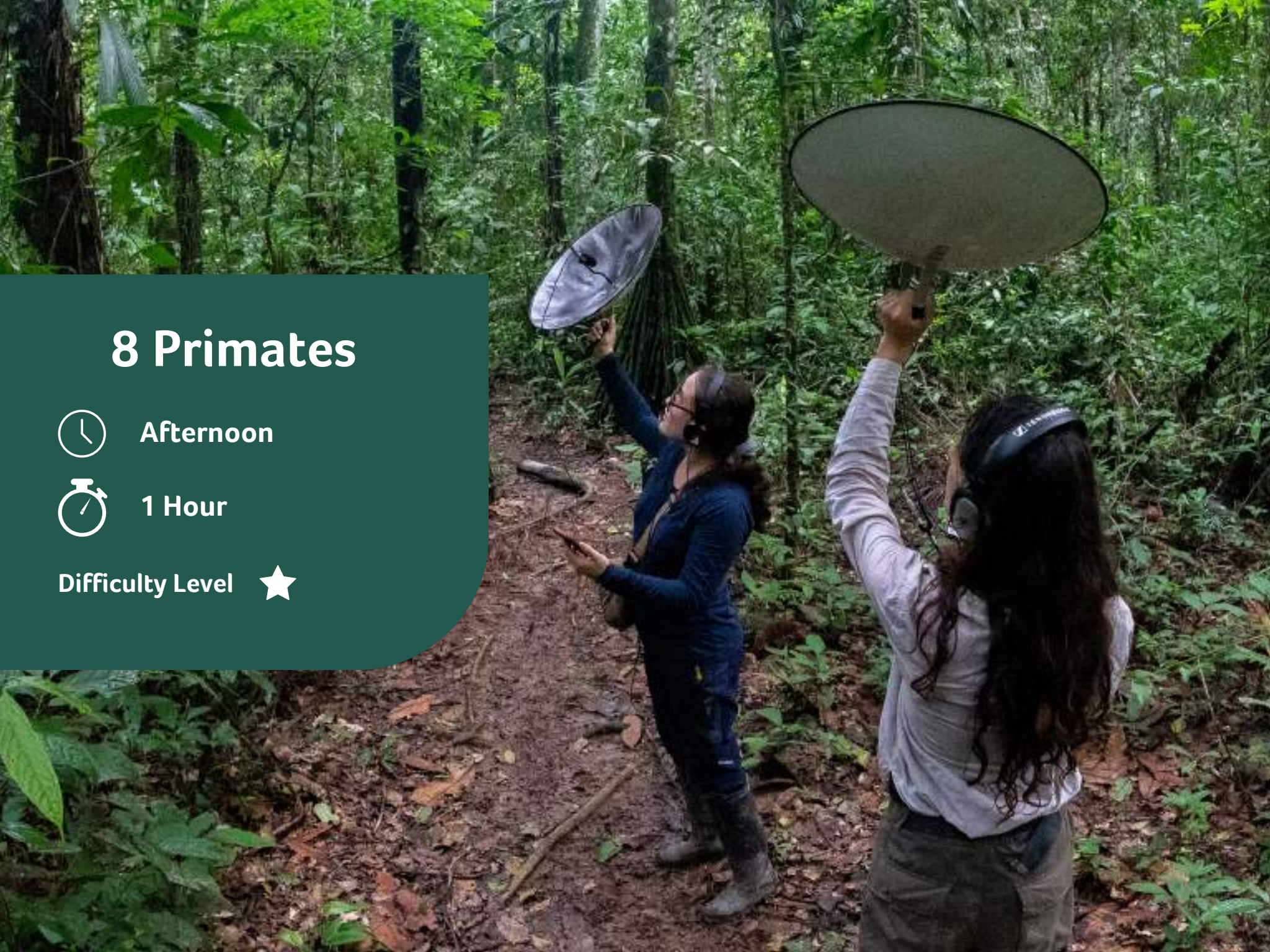


Afternoon



1 Hour

Difficulty Level ★



8 Primates

Citizen Scientist Adventure: Today you have the opportunity to put on the hat of a citizen scientist by contributing to Wired Amazon's 8 Primates project. Participate in one hour immersive experience where you will help our research team unravel the secrets of the eight existing primate species in the Tambopata National Reserve.

Become an integral part of our bio-acoustic landscape recordings. By following a simple protocol during your daily activities, or by joining our expert monkey-tracking guides, you will make one-minute recordings on your phone, providing a valuable contribution to wildlife research and conservation efforts.

Tambopata Research Center

EXPLORE THE HEART OF THE AMAZON RAINFOREST

Night Lectures



Before dinner



1 Hour

Difficulty Level ★



Night Lectures

After spending the day exploring the incredible beauty of the Amazon rainforest, we do something a little different in the evening. While you relax at the lodge, our field researchers give you a taste of our jungle initiatives. These evening lectures enrich your experience and immerse you in fun and engaging stories and experiences.

Evening lectures prepared by Wired Amazon's team of researchers at TRC to cover threats, opportunities and conservation projects in the Tambopata National Reserve.

Tambopata Research Center

EXPLORE THE HEART OF THE AMAZON RAINFOREST

Discovering New Species



After dinner



2 Hours

Difficulty Level ★



Discovering New Species

Help us reveal nature's wonders, become a scientist and get the chance to discover a new species! There is an amazing world of diversity awaiting exploration! We will meet the resident researcher team at the lobby for a brief explanation on the types of specimens we will be looking for, and how to identify them.

They will give us tools needed for collecting, and we will walk around 15 minutes from the lodge to the light trap where an incredible variety of insects will be waiting for us. We will look for and collect certain types of insects, and, if we are lucky, we may even discover a new species!

Tambopata Research Center

EXPLORE THE HEART OF THE AMAZON RAINFOREST



We also have

EXPLORE THE HEART OF THE AMAZON RAINFOREST

We also have

EXPLORE THE HEART OF THE AMAZON RAINFOREST

Colorado Claylick



Morning



2.5 Hours

Difficulty Level ★



Colorado Claylick

On most clear mornings of the year, dozens of large macaws and hundreds of parrots and parakeets congregate in a raucous and colorful spectacle on a cliff near the lodge. This fascinating spectacle inspired a National Geographic cover story. From our inconspicuous spot, with the aid of powerful telescopes and weather permitting, we will be able to observe green, scarlet and blue-winged macaws and several species of small parrots and parakeets as they descend to ingest clay. Departures are at dawn when the clay lick is most active.

Tambopata Research Center

EXPLORE THE HEART OF THE AMAZON RAINFOREST

Ceiba Walk

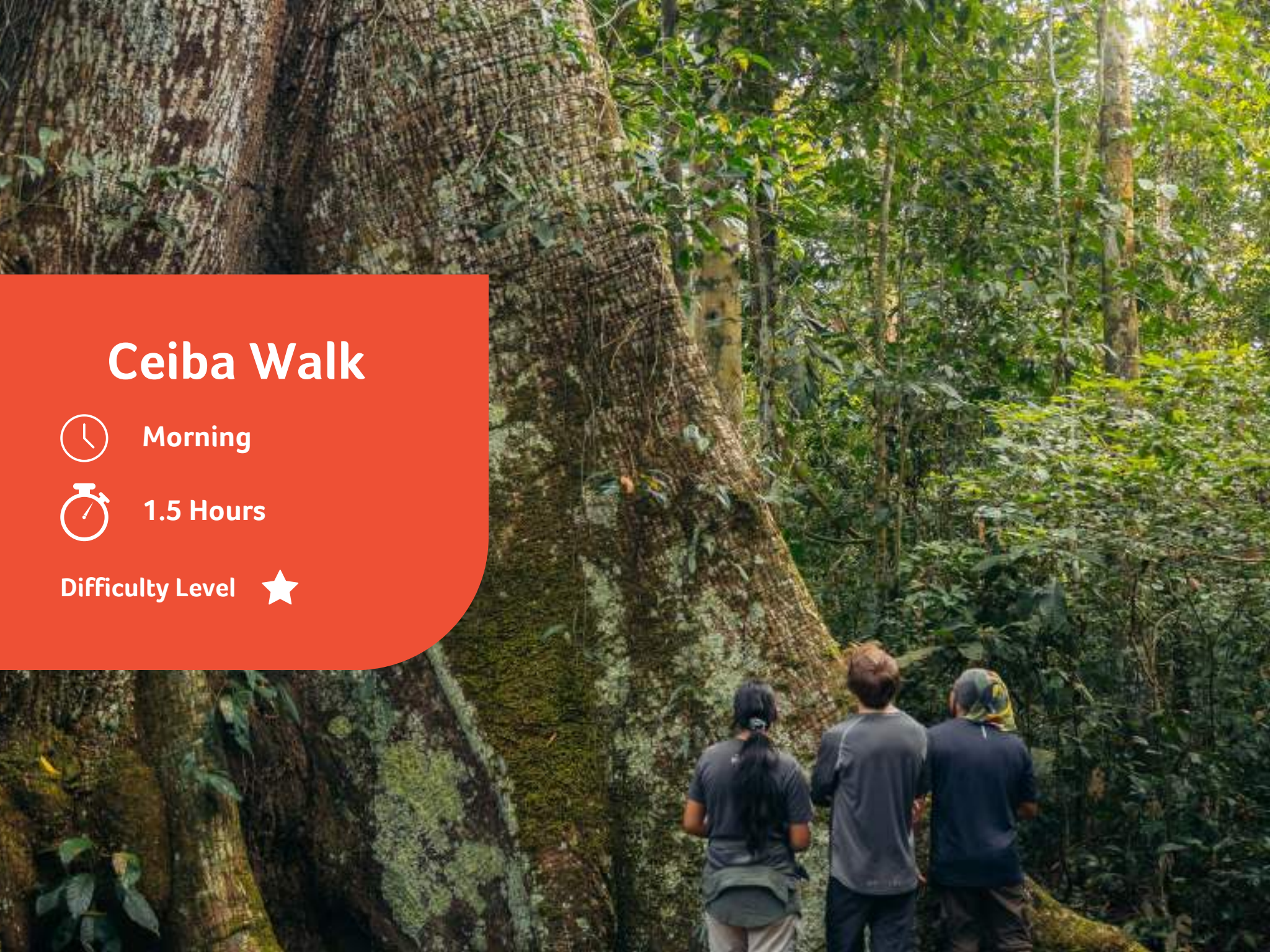


Morning



1.5 Hours

Difficulty Level ★



Ceiba Walk

Embark on a hike to the Ceiba. The highlight during this hike is the encounter with the largest tree in the surroundings: a giant ceiba. The natives consider these trees to be sacred. During the hike we will focus on the natural history of this majestic tree and learn why they are so special.

Tambopata Research Center

EXPLORE THE HEART OF THE AMAZON RAINFOREST

Rainforest Master Hike

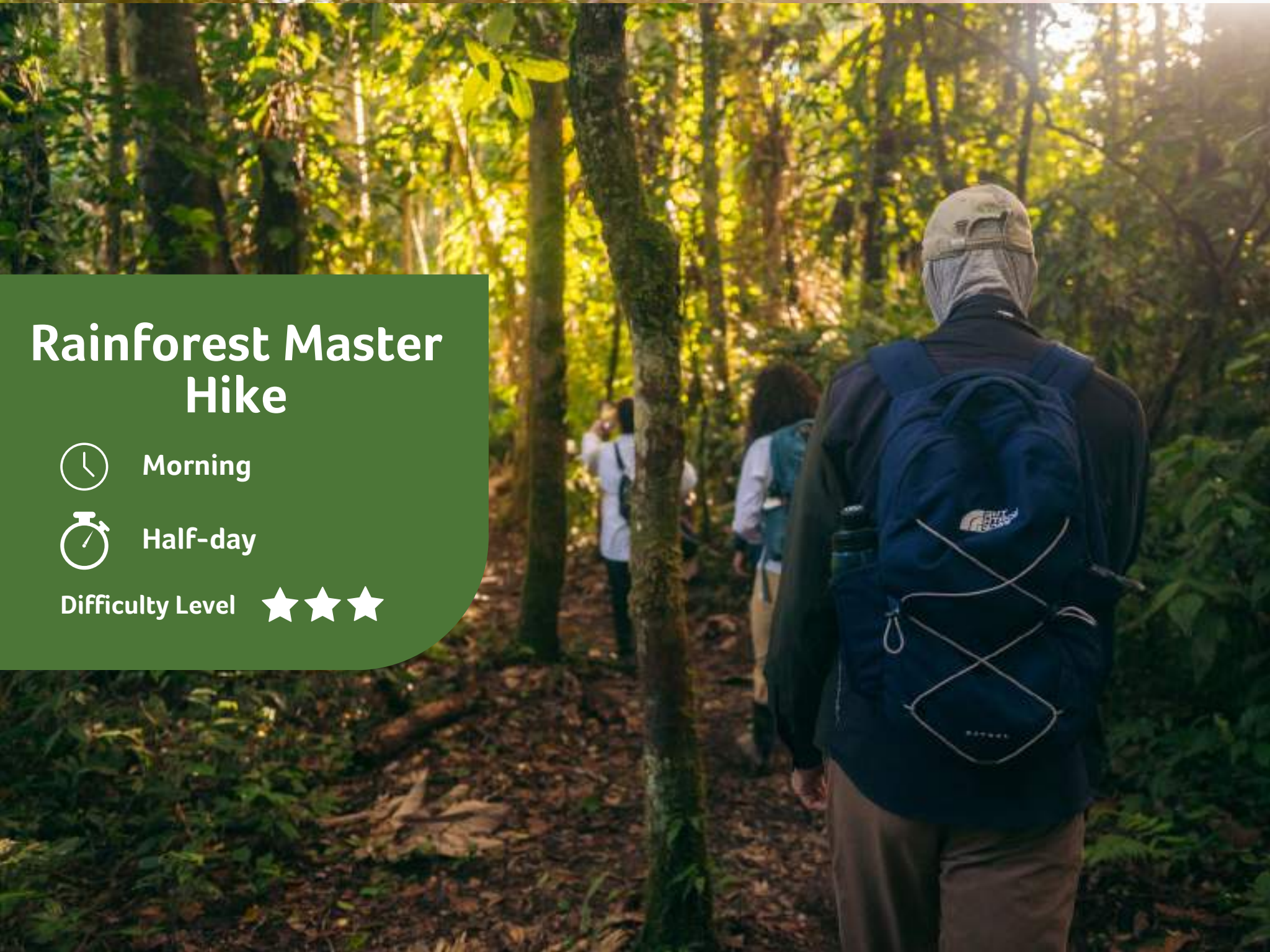


Morning



Half-day

Difficulty Level



Rainforest Master Hike

This is the perfect hike for the hardcore, nature-loving hiker, crossing through a variety of ecosystems and an endless network of trails. Crossing through a variety of ecosystems and an endless network of trails, this hike will last about 6 hours and maximize your opportunities for wildlife. Bring plenty of water and repellent!

Tambopata Research Center

EXPLORE THE HEART OF THE AMAZON RAINFOREST

Monkey Search

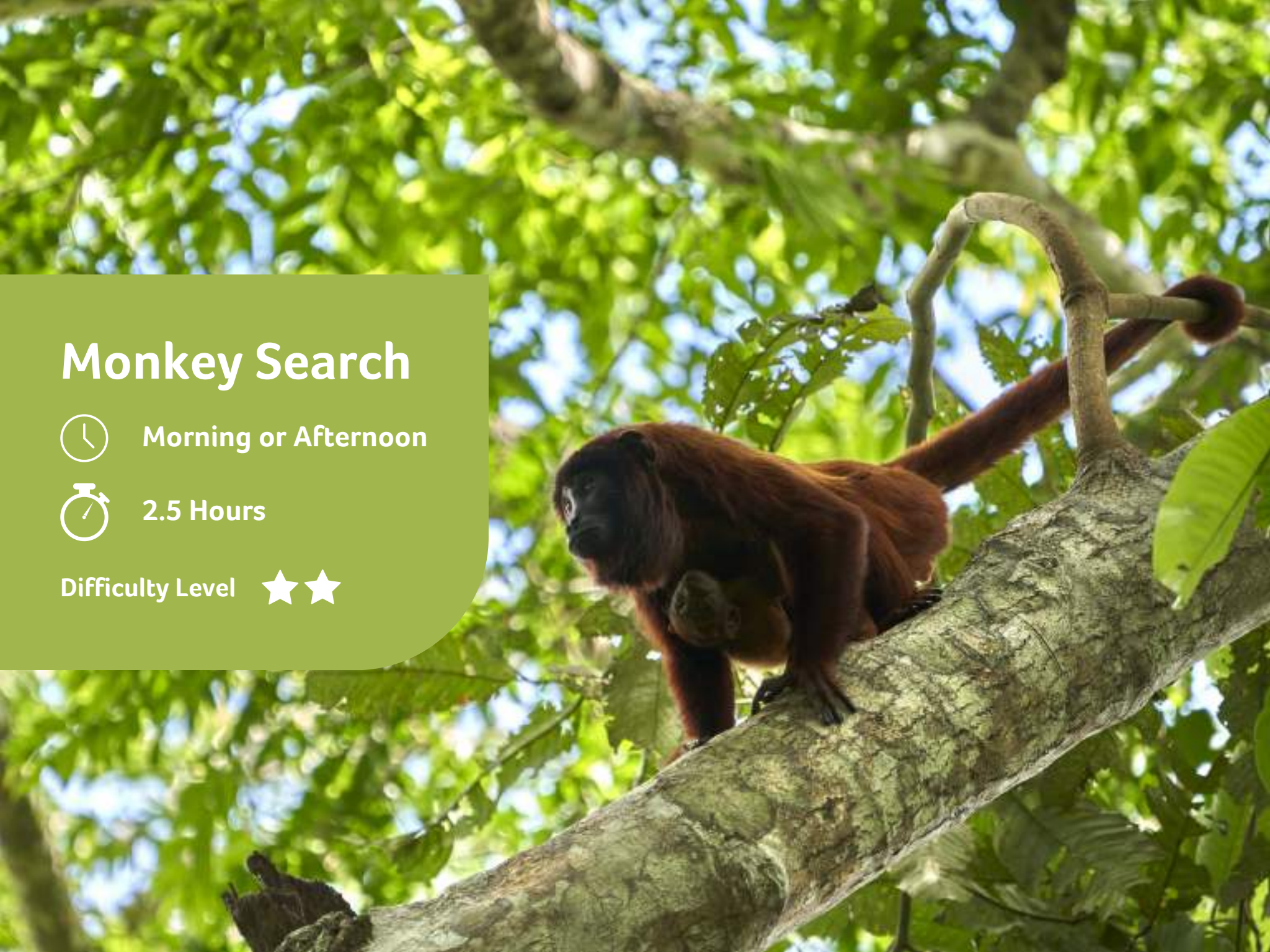


Morning or Afternoon



2.5 Hours

Difficulty Level ★★



Monkey Search

This five kilometer trail covers a completely different habitat with smaller, thinner trees on top of hills and slopes. A favorite ecosystem for the many species of monkeys that inhabit the Tambopata region. Great opportunity to learn about these curious and lively inhabitants of this captivating forest.

Tambopata Research Center

EXPLORE THE HEART OF THE AMAZON RAINFOREST

Secrets of the Surroundings



Morning or Afternoon



1.5 Hours

Difficulty Level



Secrets of the Surroundings

Explore TRC's surrounding gardens at a relaxed pace. Pristine primary forest surrounds the lodge, so you don't have to go far to have exciting encounters with a great diversity of flora and fauna. Accompanied by your guide, you will walk in a flooded forest. The encounter with ancient trees is the main feature along a trail crisscrossed by streams and ponds.

Among them we will find different species of trees such as fig, ceiba and shihuahuaco, which are home to countless species of insects, reptiles and mammals.

Tambopata Research Center

EXPLORE THE HEART OF THE AMAZON RAINFOREST



Giants of the Amazon



Morning or Afternoon



3 Hours

Difficulty Level ★★

Giants of the Amazon

Marvel at the towering trees of the rainforest.

This five kilometer trail covers the prototypical rainforest with huge trees crisscrossed by streams and ponds. Among the figs, ceibas and shihuahuacos we will look for squirrel monkeys, capuchin monkeys and spider monkeys, as well as huanganas. TRC is located within this habitat.

Discover the magnificence of the jungle trees: this part of the forest is filled with all kinds of trees, from huge 400-year-old ironwoods to funny-looking fang-like palms. Many trees soar up to 50 meters (approximately 160 feet) into the canopy, with truly gigantic trunks and far-reaching root systems that will leave you in awe.

Tambopata Research Center

EXPLORE THE HEART OF THE AMAZON RAINFOREST

Bamboo Trail



Morning or Afternoon



3 Hours

Difficulty Level ★★ ★



Bamboo Trail

One of the most remarkable and megadiverse ecosystems in Tambopata is the bamboo forest. Bamboo is a fast-growing plant. Where it grows, bamboo takes over and establishes a totally different habitat. Learn more about which species choose this ecosystem as their home. This trail is particularly attractive to bird lovers, as it is home to highly specialized bird species, including some endemics.

Tambopata Research Center

EXPLORE THE HEART OF THE AMAZON RAINFOREST

Amazon Birdwatching



Morning or Afternoon



2 Hours

Difficulty Level ★




Amazon Birdwatching

This is the ideal activity for bird watching lovers. With the help of our specialized guides, we will help you find those species that are missing from your list. Tambopata has a great diversity of specialist species. Be prepared for a 2-hour birding session to search for and try to find the elusive birds that are missing from your list.

Tambopata Research Center

EXPLORE THE HEART OF THE AMAZON RAINFOREST

The World Of Butterflies

 Morning or Afternoon

 2 Hours

Difficulty Level 



The World Of Butterflies

If you love butterflies, you will enjoy this activity. The Tambopata region holds the record for the most butterfly species in the world. Our researchers and guides have identified their favorite habitats according to species. Big, small, colorful, transparent... a delightful visual experience awaits you. This is also a great opportunity to photograph these colorful creatures. In addition to witnessing an extraordinary spectacle of nature, you will learn about their behavior and their amazing methods of adaptation to survive in the jungle.

Tambopata Research Center

EXPLORE THE HEART OF THE AMAZON RAINFOREST

Sunset Cruise

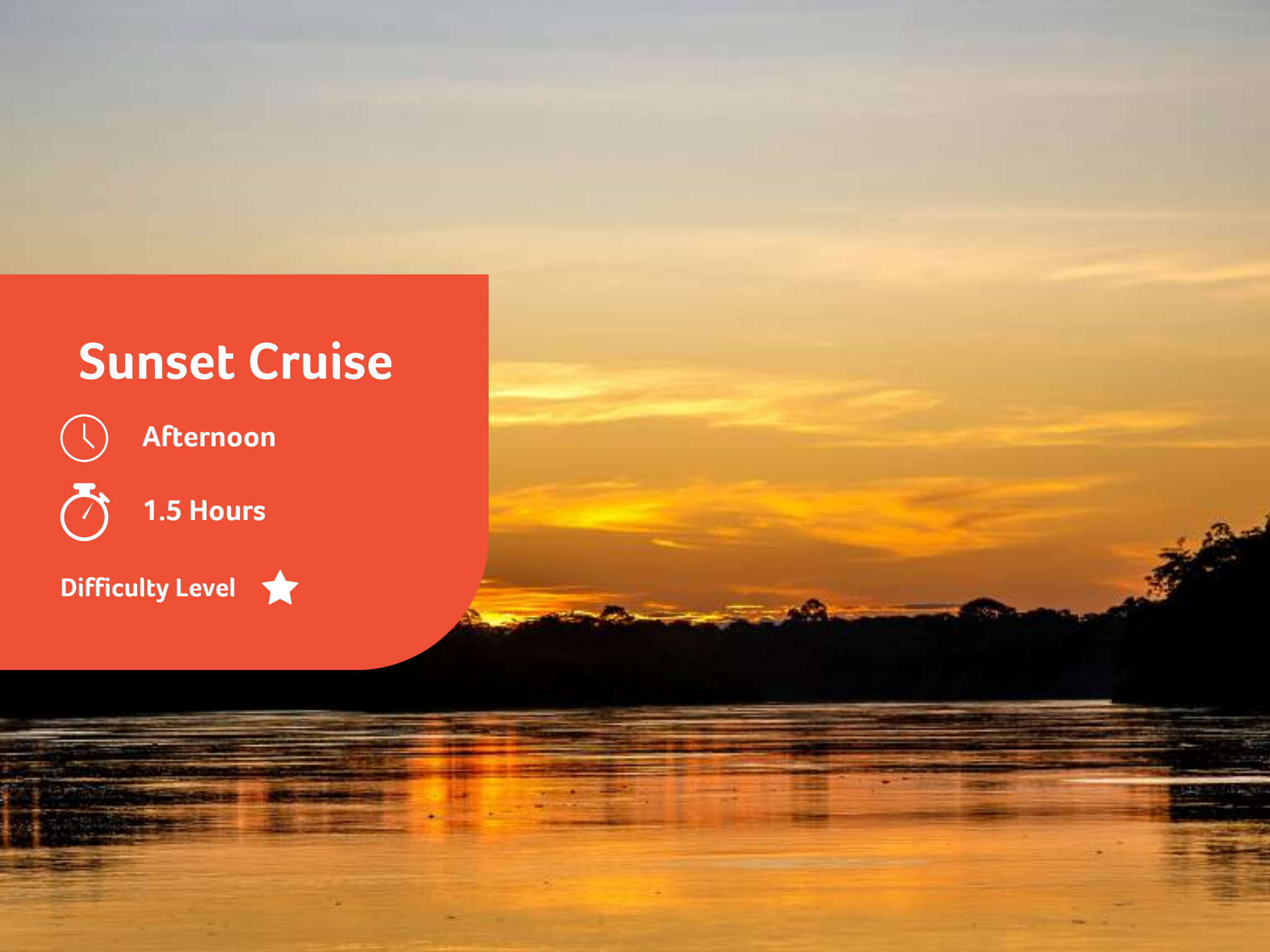


Afternoon



1.5 Hours

Difficulty Level ★



Sunset Cruise

Sunsets in the Amazon are spectacular and one of the best places to watch them is from a boat on the river. In the afternoon your guide will take you for a leisurely ride of approximately 2 hours on the Tambopata River, we will also receive information about the dynamics of the rivers as we look for wildlife before enjoying the sunset.

Tambopata Research Center

EXPLORE THE HEART OF THE AMAZON RAINFOREST

Night Walk



Night



1 Hour

Difficulty Level ★



Night Walk

Most of the rainforest comes alive at night. This makes the night the best time of the day to see strange and beautiful frogs, insects and other nocturnal animals. The guide will take us on a trail that leaves from near the lodge for an exciting one and a half hour night walk in the Amazon rainforest.

Tambopata Research Center

EXPLORE THE HEART OF THE AMAZON RAINFOREST